

# Terms and Conditions – Digital Sheet Music

**Thank you for purchasing digital sheet music from Hillsong Music.  
Your purchase grants you the following rights:**

1. Make one copy of the sheet music solely for back-up purposes.
2. Print ONE copy of the sheet music for your personal purposes (performances, worship services, personal study, musical teaching, etc).

**However the following rights have NOT been granted to you:**

1. Reproduce copies of the sheet music in whole or in part.
2. To translate, enhance, modify, alter or adapt the sheet music or any part of it for any purpose.
3. Cause or permit any third party to translate, enhance, modify, alter or adapt the sheet music or any part of it for any purpose.
4. Sub-license, lease, lend, sell, rent, distribute or grant others any rights, or provide copies of the sheet music to others.

Reproductions of the sheet music can be made for the purpose of church worship only with an existing Music Reproduction Licence from CCLI. For further information contact CCLI at <http://www.ccli.com>

For further information about copyright or other use of this music, please contact Hillsong Music Publishing at [publishing@hillsong.com](mailto:publishing@hillsong.com)

By printing the following document I hereby acknowledge that I have read and I accept the Terms and Conditions outlined above.

# ECHOES (TILL WE SEE THE OTHER SIDE)

WORDS AND MUSIC BY  
JOEL HOUSTON, BENJAMIN HASTINGS  
& BEN FIELDING  
ADDITIONAL WORDS FROM "GOOD GRACE"  
BY JOEL HOUSTON

♩ = 142

OPTIONAL PORTION FROM "GOOD GRACE" AS RECORDED

1<sup>5</sup>

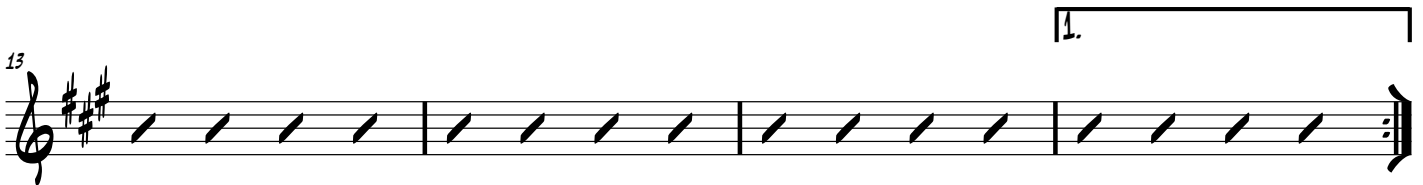


1ST X: A CAPELLA WITH KICK ON 1/4S

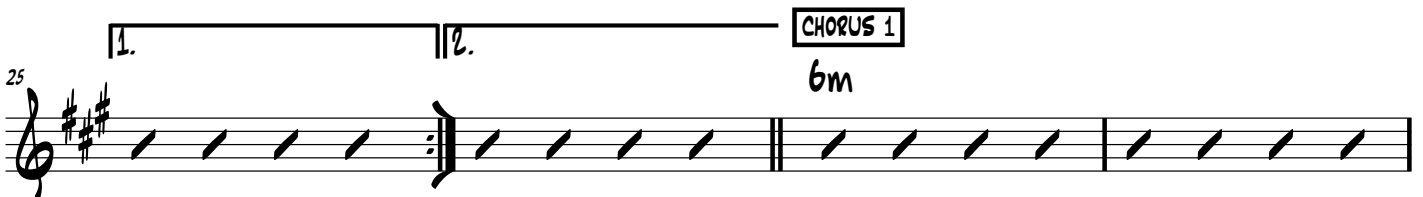
2ND X: + TOMS, DRONING 8THS



+ DRONING 8THS



START OF 'ECHOES (TILL WE SEE THE OTHER SIDE)'



© 2018 Hillsong Music Publishing.

All rights reserved. International copyright secured. Used by permission.

Tel: +61 2 8853 5284 Email: publishing@hillsong.com CCLI Song No. 7124908

29 1 5 6m

33 1 5 1

37 4 1 5/7 6m 4

41 1 1 4

HOOK

FULL GROOVE

45 1 4 6m7 4

49 1

1. 2.

CHORUS 1

6m7

DRIVING

53 1 5 6m7

57 1 5 1

61 4 1 5/7 6m<sup>7</sup> 4

66 1 **HOOK**  
1

71

76 **TAG**  
6m 5 4 6m

81 5 4 6m 5

*BUILDING 8THS*

86 4 1, 2, 3. 4. **HOOK**  
1 4

*DRIVING*

91 1 4 6m<sup>7</sup> 4 1 **TO CODA**

96 1, 3. 2. **CHORUS 2**  
6m 1

*BAND OUT! KICK 1/4S + PADS*

101 5 6m 1 5

Musical staff 101-105 in treble clef with key signature of three sharps (F#, C#, G#). The staff contains five measures of rhythmic notation represented by diagonal slashes. Above the staff, the fret numbers 5, 6m, 1, and 5 are positioned over the first, second, fourth, and fifth measures respectively.

106 1 4 1 5/7 6m

Musical staff 106-110 in treble clef with key signature of three sharps. The staff contains five measures of rhythmic notation represented by diagonal slashes. Above the staff, the fret numbers 1, 4, 1, 5/7, and 6m are positioned over the first, second, third, fourth, and fifth measures respectively.

111 4 1 6m

**CHORUS 2**

+ GUITARS, BUILDING THROUGHOUT

Musical staff 111-115 in treble clef with key signature of three sharps. The staff contains five measures of rhythmic notation represented by diagonal slashes. Above the staff, the fret numbers 4, 1, and 6m are positioned over the first, second, and third measures respectively. A box labeled "CHORUS 2" is placed above the fourth measure. A repeat sign is at the end of the staff, with the text "+ GUITARS, BUILDING THROUGHOUT" below it.

116 1 5 6m 1

Musical staff 116-120 in treble clef with key signature of three sharps. The staff contains five measures of rhythmic notation represented by diagonal slashes. Above the staff, the fret numbers 1, 5, 6m, and 1 are positioned over the first, second, third, and fourth measures respectively.

121 1. 5 2. 5 1 4

Musical staff 121-125 in treble clef with key signature of three sharps. The staff contains five measures of rhythmic notation represented by diagonal slashes. Above the staff, the fret numbers 1., 5, 2., 5, 1, and 4 are positioned over the first, second, third, fourth, and fifth measures respectively. A first ending bracket spans the first two measures, and a second ending bracket spans the last two measures.

126 1 5/7 6m 4 1

**D.S. AL CODA (WITH REPEAT)**

Musical staff 126-130 in treble clef with key signature of three sharps. The staff contains five measures of rhythmic notation represented by diagonal slashes. Above the staff, the fret numbers 1, 5/7, 6m, 4, and 1 are positioned over the first, second, third, fourth, and fifth measures respectively. A box labeled "D.S. AL CODA (WITH REPEAT)" is placed above the fifth measure. A double bar line is at the end of the staff.

131 1<sup>5</sup>

**OUTRO**

BAND OUT, LET RING

Musical staff 131-135 in treble clef with key signature of three sharps. The staff contains five measures of rhythmic notation represented by diagonal slashes. Above the staff, the fret number 1<sup>5</sup> is positioned over the first measure. A box labeled "OUTRO" is placed above the second measure. A long horizontal line with diamond-shaped markers spans the last three measures. Below the staff, the text "BAND OUT, LET RING" is written.

136 1. 2.

Musical staff 136-140 in treble clef with key signature of three sharps. The staff contains five measures of rhythmic notation represented by horizontal dashes. Above the staff, the first ending bracket "1." spans the first two measures, and the second ending bracket "2." spans the last two measures. A double bar line is at the end of the staff.