

Terms and Conditions – Digital Sheet Music

**Thank you for purchasing digital sheet music from Hillsong Music.
Your purchase grants you the following rights:**

1. Make one copy of the sheet music solely for back-up purposes.
2. Print ONE copy of the sheet music for your personal purposes (performances, worship services, personal study, musical teaching, etc).

However the following rights have NOT been granted to you:

1. Reproduce copies of the sheet music in whole or in part.
2. To translate, enhance, modify, alter or adapt the sheet music or any part of it for any purpose.
3. Cause or permit any third party to translate, enhance, modify, alter or adapt the sheet music or any part of it for any purpose.
4. Sub-license, lease, lend, sell, rent, distribute or grant others any rights, or provide copies of the sheet music to others.

Reproductions of the sheet music can be made for the purpose of church worship only with an existing Music Reproduction Licence from CCLI. For further information contact CCLI at <http://www.ccli.com>

For further information about copyright or other use of this music, please contact Hillsong Music Publishing at publishing@hillsong.com

By printing the following document I hereby acknowledge that I have read and I accept the Terms and Conditions outlined above.

High And Lifted Up

♩ = 78

Words and Music by Darlene Zschech and
Mike Guglielmucci

F



C



B♭



F



C



B♭



F



C



B♭



F



A

V1: Lord of all — the earth, — and all — of hea - ven. I come and seek — Your face.
V2: Lord of righ - teous-ness, — You come — in glo - ry. Bright and mor - ning star. —

C



B♭



F



C



B♭



— Wor - ship You, — with all — I have — with - in — me.
— All my days, — I'll wor - ship and — a - dore — You.

F



C



Bb



Gm



B



Hum - bled by ___ Your grace. ___ P'Chs 1: Ev - ery heart, e - very na - tion. Ev - ery
 Hea - ler of ___ my heart. ___ P'Chs 2: Ev - ery prayer, ev - ery cry, ___ You a -



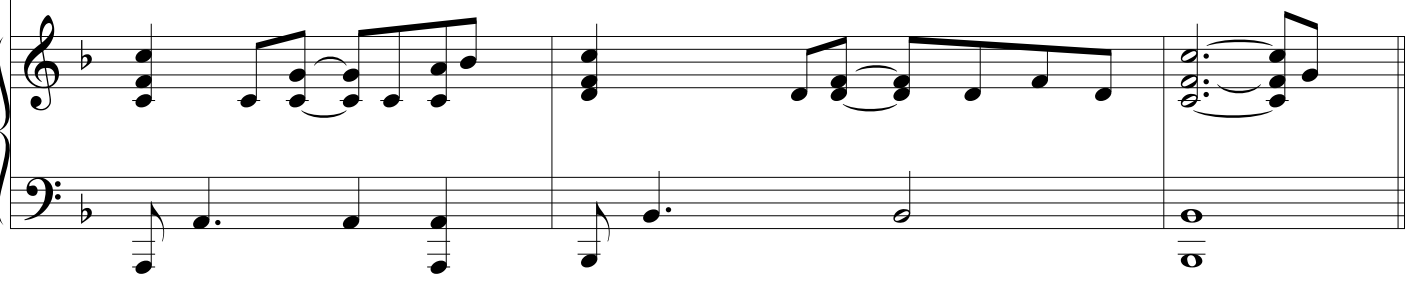
F/A



Bb



tribe, all cre - a - tion, will ___ bow be - fore ___ Your pre - sence and sing. ___ Chs: You are
 lone sa - tis - fy. ___ We will lift Your praise ___ a - gain and a - gain. ___



F



Bb/D



C



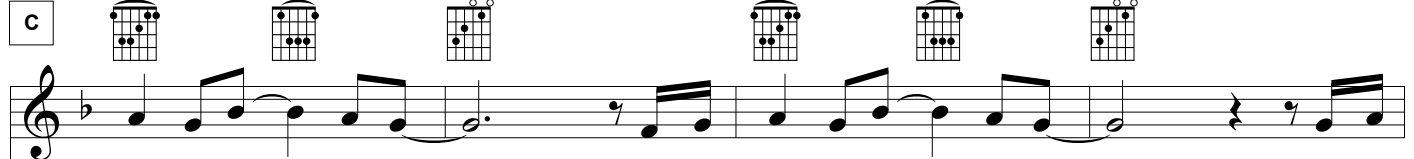
F



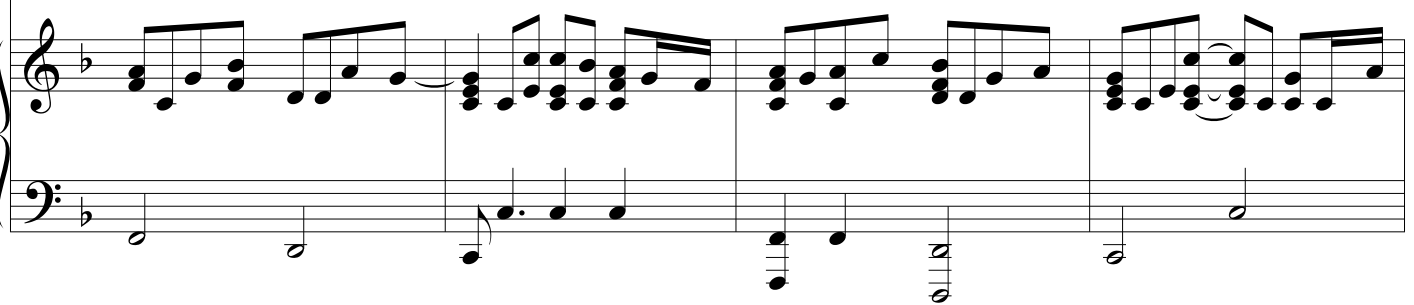
Bb/D



C



high and lif - ted up. ___ You are high, and lif - ted up. ___ And my



G^m

F

F/A

B^b

C

B^b

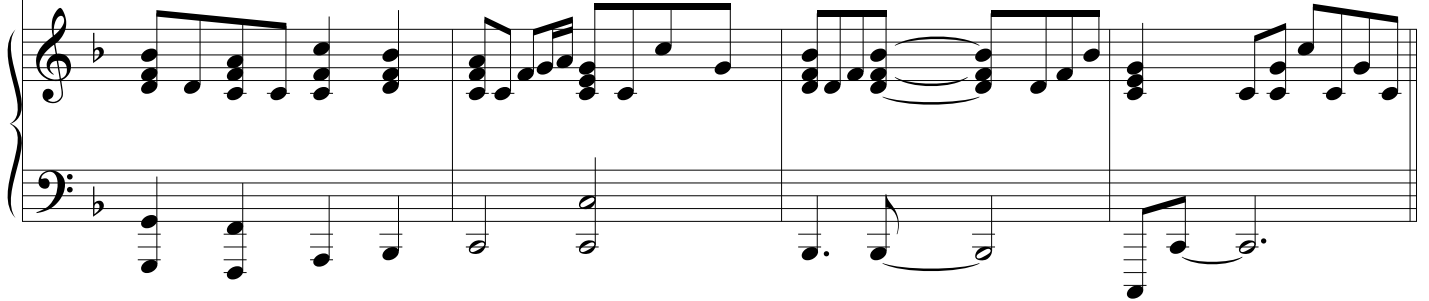
C



D.C 1st x



soul sings hal - le - lu - jah to the Lamb. — The Lamb of — God. —



D

B^b

F

D^m

C

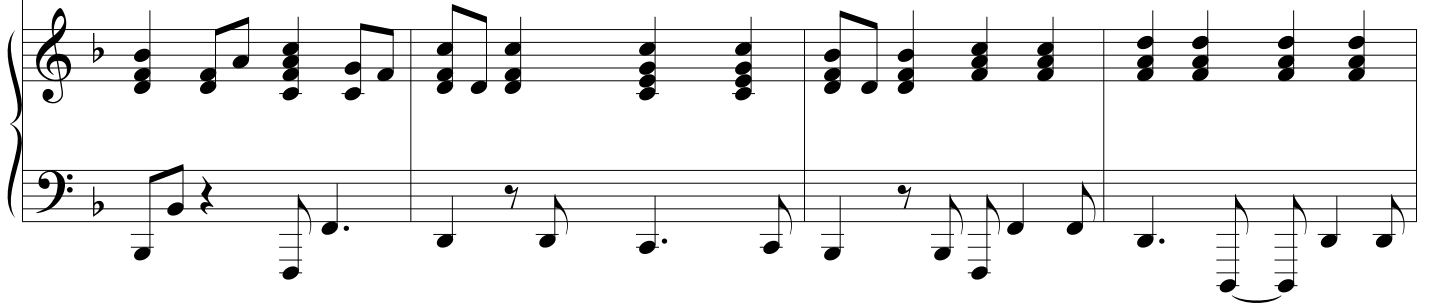
B^b

F

D^m



Bdg: Ma - jes - ty. Ma - jes - ty. — Je - sus, Lamb of God.



B^b

F

D^m

C

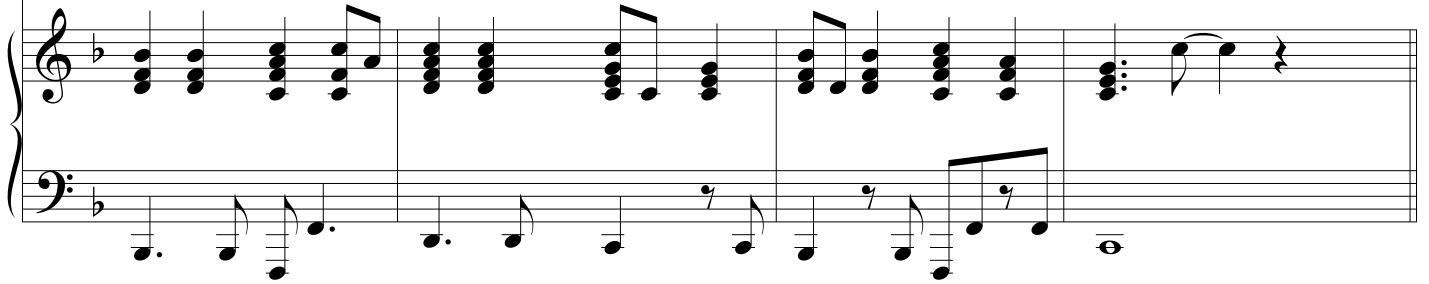
B^b

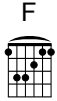
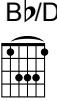
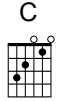

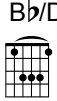
F

C

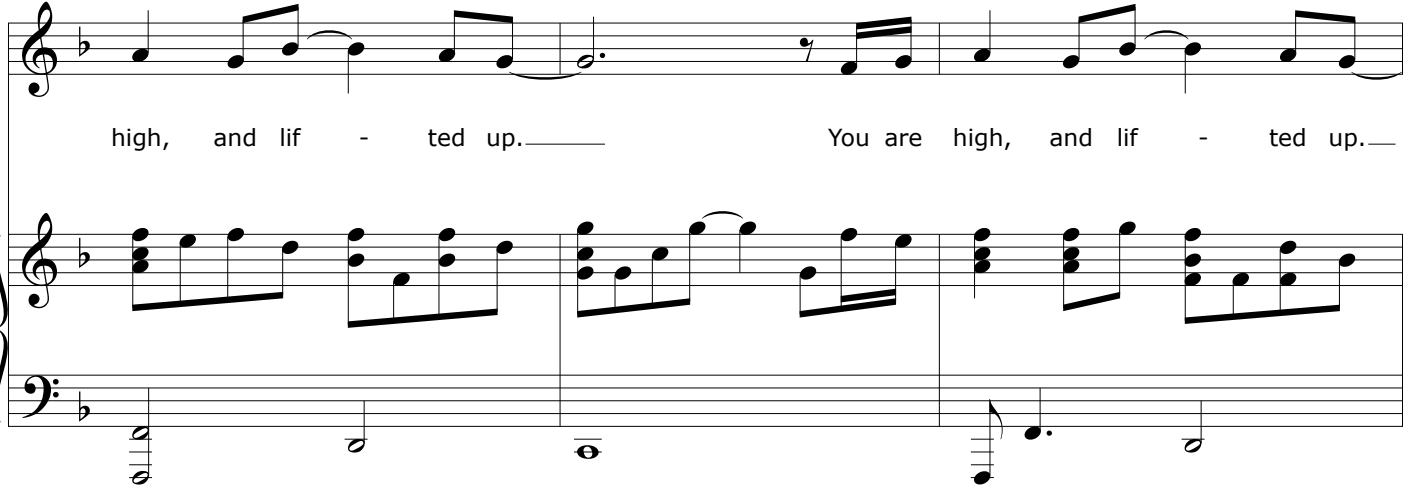


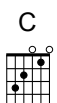




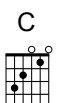




Ma - jes - ty, Ma - jes - ty. — Ho - ly are You, Lord. Chs 2: You are




E     

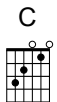


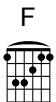
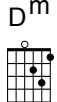
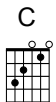
high, and lif - ted up. — You are high, and lif - ted up. —




         

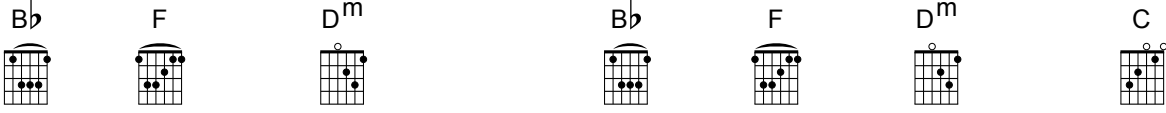
— And my soul sings hal - le - lu - jah. And my soul sings hal - le -




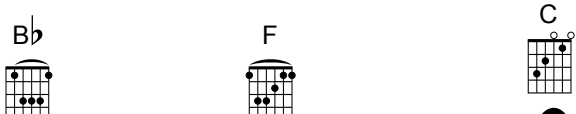
lu - jah. **Bdg 2:** Ma - jes - ty, Ma - jes - ty. —








Je - sus, Lamb of God. Ma - jes - ty, Ma - jes - ty. —





Ho - ly are You Lord. *Fine*

Rpt al FINE