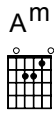
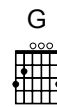
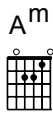


# Desperate People

♩ = 110

Words and Music by Joel Houston and Michael Guy Chislett

A



V1: You crossed the great di - vide, You took our — place. — You of - fered up Your  
 V2: Dis - trac - tion cast a - side, we seek Your — face. — We of - fer up our  
 V3: We did - n't come to leave here en - ter - tained. — or wor - ship un - der

A<sup>m</sup>



F



A<sup>m</sup>



life, though we had failed. The veil was torn and love re - mained. You are  
 lives to bring You praise. A love that walls can - not con - tain. You are  
 a - ny o - ther name. We're cry - ing out for You a - lone You are

1

C



G



2,3

C



G



ho - ly, Lord. ly, Lord. P'Chs: We're ri-sing up in  
 ly, Lord. ly, Lord.

D<sup>m7</sup>

B



A<sup>m</sup>



F



spi - rit and in truth. A li - ving sa - cri - fice, we wor - ship You.

C



Dm7



A<sup>m</sup>



— A peo-ple un - di - vi - ded. Lord, hear — us — sing. — We are Yours, —

F



— and You are — our — King. — Chs: This is — our

C



G



A<sup>m</sup>



love, — hearts joined — as — one. — Des - perate — for all You are. —

F C G

— Lord, break down— these— walls, — and see how— we— run.—

Dm7 F

Last to F

Des - perate— for all You want.— We chase Your— heart.—

A<sup>m</sup> F A<sup>m</sup> 2 A<sup>m</sup> G/B

heart.—

F C G/B A<sup>m</sup> G/B

This system contains five guitar chord diagrams: F (first fret, 2nd and 4th strings), C (no fret, 2nd, 4th, and 5th strings), G/B (second fret, 2nd, 3rd, and 5th strings), A<sup>m</sup> (no fret, 2nd, 3rd, and 4th strings), and G/B (second fret, 2nd, 3rd, and 5th strings). The piano accompaniment features a treble clef with chords and a bass clef with a steady eighth-note bass line.

F A<sup>m</sup> G/B

D

Bdg: We've found our \_\_\_ voice, \_\_\_ we've found our \_\_\_ cause.

This system includes four guitar chord diagrams: F, A<sup>m</sup>, G/B, and D (no fret, 2nd, 3rd, and 4th strings). The vocal line begins with a rest, followed by the lyrics "Bdg: We've found our \_\_\_ voice, \_\_\_ we've found our \_\_\_ cause." The piano accompaniment continues with chords and a bass line.

F C G/B A<sup>m</sup>

— We're on our \_\_\_ knees, \_\_\_ the car - pet's worn. \_\_\_ As we join our \_\_\_ hearts, —

This system features four guitar chord diagrams: F, C, G/B, and A<sup>m</sup>. The vocal line continues with the lyrics "— We're on our \_\_\_ knees, \_\_\_ the car - pet's worn. \_\_\_ As we join our \_\_\_ hearts, —". The piano accompaniment provides harmonic support with chords and a bass line.

G/B



F



D~~S~~ al Coda

— with dis-tant— shores, — and sing — to You, — Lord. — This is — our

E

Coda

C



G



Chs 2: This is — our love, — hearts joined — as — one. —

A<sup>m</sup>



F



C



Des - perate — for all You are. — Lord, break down — these — walls, — and

G



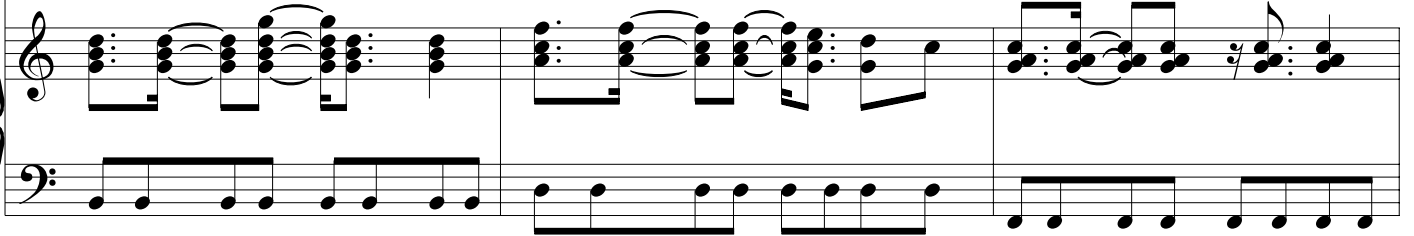
Dm7



F



see how we run. Desperate for all You are. We chase Your



F



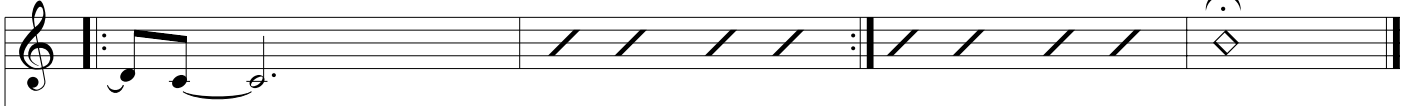
A<sup>m</sup>



F



A<sup>m</sup>



heart.

